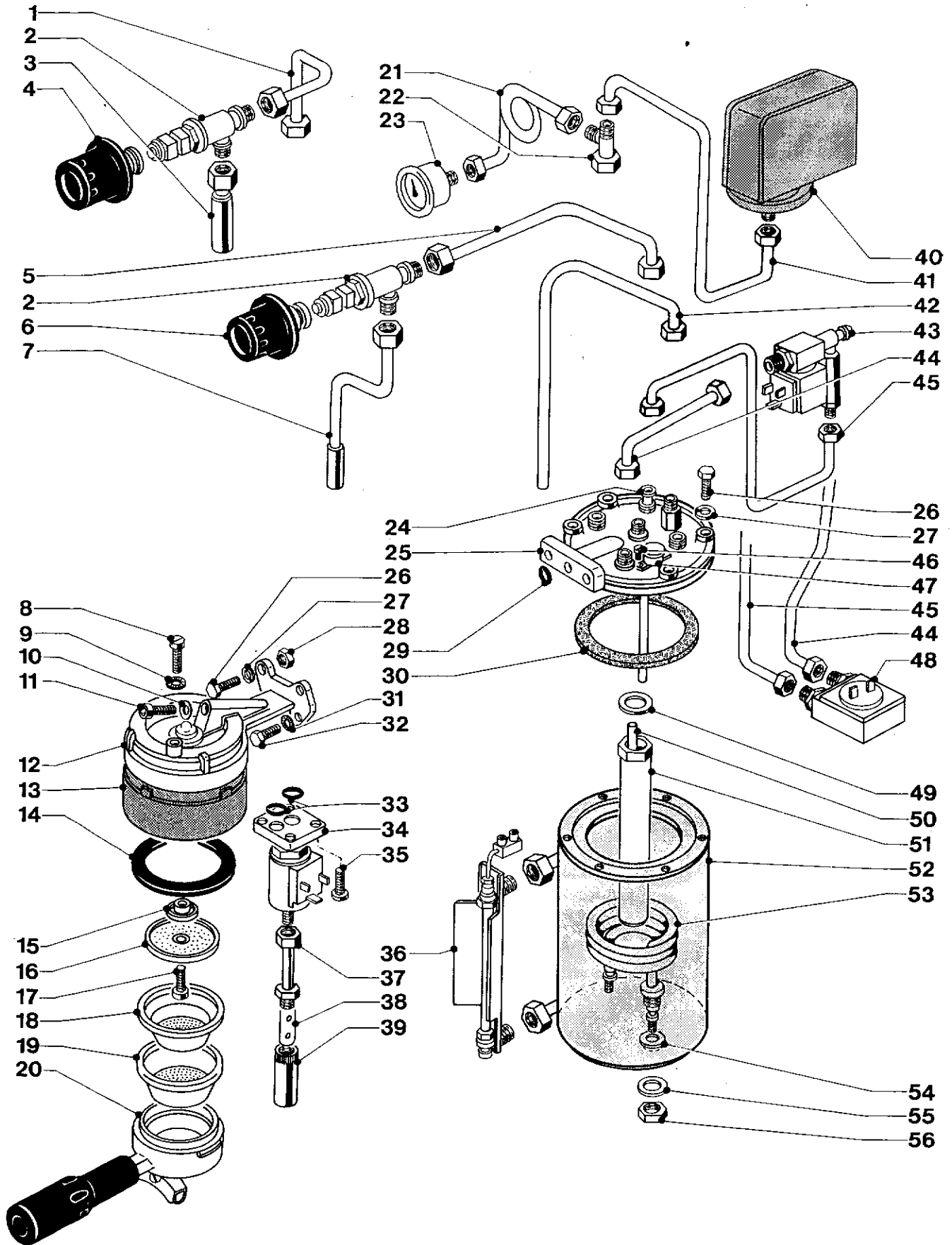
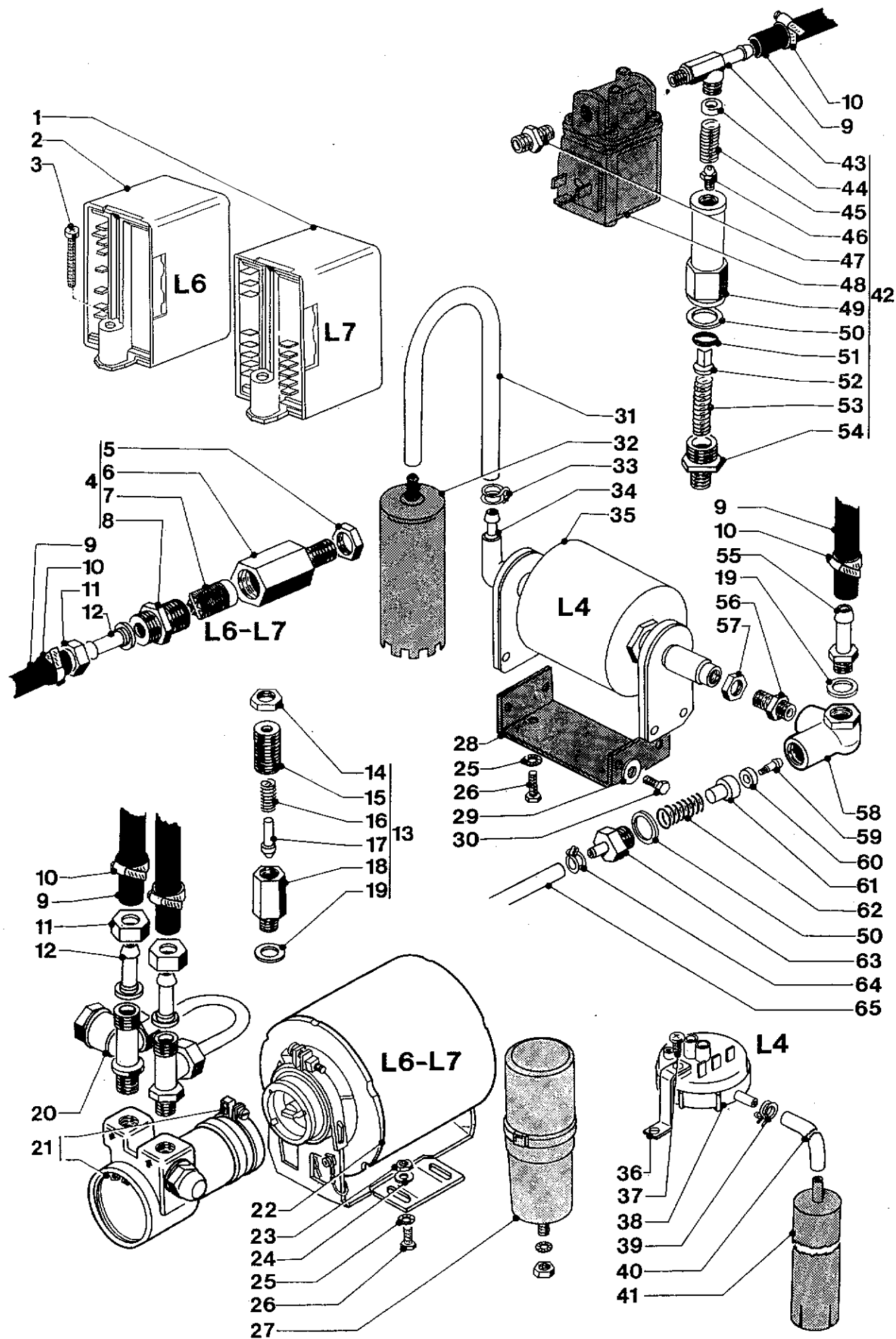


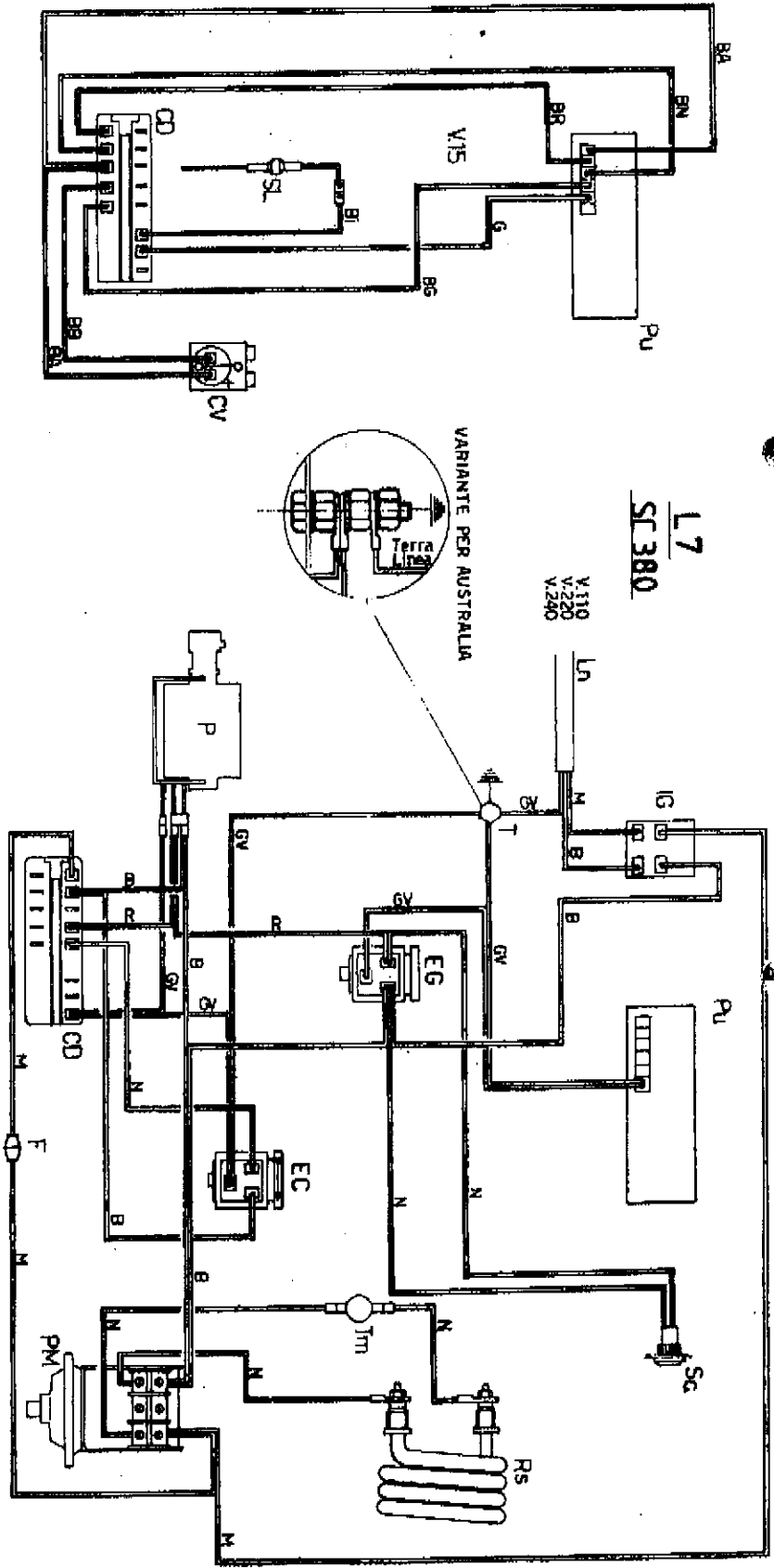
	COD.	CARROZZERIA L4-L6-L7	CARROSSERIE L4-L6-L7	KAROSSERIE L4-L6-L7	L4-L6-L7 BODY	CARROCERIA L4-L6-L7
1	37-154-213	VITE INOX 4,2 X 16 AUT.TC	VIS INOX 4,2 X 16	SCHRAUBE 4,2 X 16 INOX	INOX SCREW 4,2 X 16	TORNILLO 4,2 X 16 INOX
2	32-330-200	TETTOIA L6-L7 -AI-	AVVENT L6-L7	DACH L6-L7	L6-L7 TOP	CUBIERTA L6-L7
3	32-330-199	TETTOIA L4 -AI-	AVVENT L4	DACH L4	L4 TOP	CUBIERTA L4
4	32-530-027	FIANCHETTO L -FE-	FLANC L	SEITENTEIL L	L PANEL	LATERAL L
5	32-530-029	PROTEZ.INTERRUPT. L -AI-	PROTECTION INTERRUPT. L	SCHALTERSCHUTZ L	L SWITCH PROTECTION	PROTECCION INTERRUPTOR L
6	10-880-101	TELAIO L4-L6 -FE-	CHASSIS L4-L6	GESTELL L4-L6	L4-L6 FRAME	TELAR L4 L6
7	10-880-102	TELAIO L7 -FE-	CHASSIS L7	GESTELL L7	L7 FRAME	TELAR L7
8	10-111-013	SEGNALATORE V.220 ROSSO	SIGNALEUR V.220 ROUGE	ZEIGER V.220 ROTER	INDICATOR V.220 RED	INDICADOR V.220 ROJO
"	10-111-014	SEGNALATORE V.110 ROSSO	SIGNALEUR V.110 ROUGE	ZEIGER V.110 ROTER	INDICATOR V.110 RED	INDICADOR V.110 ROJO
"	38-221-005	TAPPO A SCATTO D.13 -PL-	BOUCHON D.13	VERSCHLUSS D.13	CAP DIAM. 13	TAPON D. 13
9	34-030-031	INTERR.BIPOL.LUM.ARAMCIO	INTERRUPTEUR ORANGE	SCHALTER ORANGE	SWITCH ORANGE	INTERRUPTOR NARANJA
10	34-030-014	PULS.BIPOL.LUMIN.BLU	BOUTON BIPOLAIRE BLEU	2 POLIG.DRUCKKNOPF BLAU	BIPOLAR.BLUE SWITCH	INTERRUPTOR BIPOL.AZUL
11	34-030-012	DEVIATORE BIPOL.BIANCO	COMMUTEUR GROUPE DL	ABWEISER GRUPPE DL	DL GROUP DEFLECTOR	DEVIADOR GRUPO DL
12	34-030-032	INTERRUIT.GENERALE MISS	INTERRUPTEUR GENERAL	HAUPTSCHALTER	GENERAL SWITCH	INTERRUPTOR GENERAL
13	10-111-014	SEGNALATORE V.110 ROSSO	SIGNALEUR V.110 ROUGE	ZEIGER V.110 ROTER	INDICATOR V.110 RED	INDICADOR V.110 ROJO
"	10-111-015	SEGNALATORE V.220 VERDE	SIGNALEUR V.220 VERT	ZEIGER V.220 GRUEN	INDICATOR V.220 GREEN	INDICADOR V.220 VERDE
14	34-070-041	PULSANT. MODA S10/DE-L7	PANH.POUSS. S10/DE-L7	DRUECH-TAFEL S10/DE-L7	S10/DE-L7 P.B. PANEL	OTONERA S10/DE-L7
15	38-125-007	COPRILIVELLO -PL-	COUVRE-NIVEAU	PEGELBEDECKUNG	LEVEL COVER FOR	CUBRE NIVEL
16	32-330-197	MASCHERINA L -AI-	PLAQUE L	MASCHE L	L MOULDING	REIA L
17	32-330-198	GRIGLIA PUSATAZZE L -AI-	GRILLE POSE-TASSES L	TASSENLEGER GITTER L	L CUPS GRATE	PARRILLA L
18	38-123-010	BACINELLA SCARICO L -PL-	BAC DECHARGE FOUR L	ABLASSEBEHALTER L	L DRAIN TANK	ROCCOGEDOR DESCHARGA L
19	38-123-011	COPERCHIO CONTEN.L4 -PL-	COUVERCLE L4	DECKEL L4	L4 COVER	TAPA ESTANQUE L4
20	38-123-012	CONTENITORE ACQUA L4 -PL-	BAC EAU L4	WASSERBEHALTER L4	L4 WATER TANK	CONTENEDOR AGUA L4
21	42-200-101	TARGHETTA RANCILIO X LT	PLAQUETTE LT	SCHILD LT	LT PLATE	TARJETA LT
22	36-201-006	RONDELLA -GOMMA-	JOINT	DICHTUNG	GASKET	ARANDIELLA
23	37-900-505	FISSATORE TONDO D.3 A 106	AGRAFE	SPANNKLAMMER	FIXER	GANCHO
24	23-115-019	VITE ZIGRINATA -OT-	VIS CHANELEE	RAENDELSCHRAUBE	KNOWLED SCREW	TORNILLO MOLETEADO
25	32-530-028	FRONTALE L -FE-	FRONTAL L	FRONTPLATTE L	L GROUP FACE	FRONTAL L
26	37-321-900	DADO M 10 NORMALE FE.ZN.	ECROU M 10	SCHRAUBENMUTTER M 10	MUT M 10	TUERCA M 10
27	10-090-010	PIEDINO CON GOMMA	PIED AVEC CAOUTCHOUC	FUESSCHEN MIT GUMMI	FOOT WITH RUBBER	PIE CON GOMA
28	37-900-809	PIASTRINA U/8/11/9 AC.BR.	PLAQUETTE U/8/11/9	PLATTE U/8/11/9	PLATE U/8/11/9	PLACA U/8/11/9
29	32-929-002	PROTEZIONE INFER. L -AI-	PROTECTION INFERIOR L	UNT.SCHUTZ L	L LOWER PROTECTION	PROTECCION INFERIOR L
30	37-112-909	VITE 2,9 X 9,5 AUTOF.TC	VIS 2,9 X 9,5 AUTOFILETTEE	SSCHN. SCHRAUBE 2,9 X 9,5	SELF-TAPP.SCREW 2,9 X 9,5	TORNILLO 2,9 X 9,5 AUTOF.
31	34-300-065	CAVO CON SPINA S.1,5 V110	CABLE ET FICHE AUSTRALIE	KABEL MIT STECKER V.110	CABLE WITH PLUG V.110	CABLE Y ENCHUFE V.110
"	34-300-052	CAVO CON SPINA AUSTRALIA	CABLE ET FICHE AUSTRALIE	KAB.MIT STECK. AUSTRALIEN	CABLE WITH PLUG AUSTRALIA	CABLE Y ENCHUFE AUSTRALIA
"	34-300-059	CAVO CON SPINA EUROPA	CABLE ET FICHE EUROPE	KABEL MIT STECKER EUROPE	CABLE WITH PLUG EUROPE	CABLE Y ENCHUFE EUROPA



	COD.	GRUPPO E CALDAIA L4-L6-L7	GROUPE ET CHAUDIERE L	GRUPPE UND KESSEL L	L GROUP AND BOILER	GRUPO Y CALDERA L
	10-051-050	GRUPPO L V.110	GROUPE L V.110	GRUPPE L V.110	L GROUP V.110	GRUPO L V.110
	10-051-060	GRUPPO L V.220	GROUPE L V.220	GRUPPE L V.220	L GROUP V.220	GRUPO L V.220
	10-051-065	GRUPPO L V.240	GROUPE L V.240	GRUPPE L V.240	L GROUP V.240	GRUPO L V.240
	10-001-025	SERIE- 5 PZ.GUARN.GR. L	SERIE JOINTS L	SATZ DICHTUNGEN L	L SET GASKETS	JUEGO JUNTAS L
1	10-043-085	TUBO 8X6X160 F3/8-F3/8-CU	TUBE 8X6X160 F3/8-F3/8	ROHR 8X6X160 F3/8-F3/8	PIPE 8X6X160 F3/8-F3/8	TUBO 8X6X160 F3/8-F3/8
2	10-060-110	RUBINETTO VAPORE	ROBINET VAPEUR	DAMPFHAHN	STEAM COCK	GRIFO VAPOR
3	10-706-009	TUBO ACQUA+SNODIO COMPLETO	TUBE EAU + FLEX.COMP.	WASSERROHR + GELENK KOMPL.	WATER PIPE+WHOLE FLEXIB.	TUBO AGUA+ARTICUL.COMPL.
4	10-060-162	VOLANTINO ACQUA COMPLETO	VOLANT EAU COMPLET	WASSERHAHNKRAD KOMPLETT	WHOLE WATER HAND-WHEEL	MANIJA MANDO AGUA COMPL.
5	10-043-061	TUBO 8X6X240 F3/8-F3/8-CU	TUBE 8X6X240 F3/8-F3/8	ROHR 8X6X240 F3/8-F3/8	PIPE 8X6X240 F3/8-F3/8	TUBO 8X6X240 F3/8-F3/8
6	10-060-152	VOLANTINO VAPORE COMPLETO	VOLANT VAPEUR COMPLET	DAMPFHAHNKRAD KOMPLETT	WHOLE STEAM HAND-WHEEL	MANIJA MANDO VAPOR COMPL.
7	10-706-009	TUBO VAPORE+SNODIO COMPL.	TUBE VAPEUR + FLEX.COMP	DAMPFRÖHR + GELENK KOMPL.	STEAM PIPE + WHOLE FLEXIB	TUBO VAPOR+ARTICUL.COMPL.
8	37-030-407	VITE M 4 X 7 TC FE,ZN.	VIS M 4 X 7	SCHRAUBE M 4 X 7	SCREW M 4 X 7	TORNILLO M 4 X 7
9	37-430-400	ROS.DENT.EST.D.4 ACC.BR.	RONDELLE DENTEELE D.4	ZAHNSCHEIBE D.4	WASHER DIAM.4	ARANDELA DENTADA D.4
10	36-240-001	GUARNIZIONE -RAME-	JOINT	DICHTUNG	GASKET	JUNTA
11	37-060-608	VITE M 6 X 8 TCEI INOX-B	VIS M 6 X 8	SCHRAUBE M 6 X 8	SCREW M 6 X 8	TORNILLO M 6 X 8 ALEN
12	20-102-921	CORPO GRUPPO L -DT-	CORPS GROUPE L	GRUPPENKÖRPER L	L GROUP BODY	CUERPO GRUPO L
13	32-339-004	FASCETTA COPRIGRUPPO -AI-	FAISCEAU POUR GROUPE RE	GRUPPENSCHELLE RE	RE GROUP COVER BAND	ABRAZADERA GRUPO RE
14	36-301-001	GUARN.SOTTOCOOP.LE -GOMMA-	SOUS-COUIPE	FILTERTR.DICHTUNG	FILTER HOLDER GASKET	JUNTA PORTAFILTRO
15	23-139-004	ROMPIGETTO GRUPPO -DT-	BRISE-JET GROUPE	STRAHLBRECHERGRUPPE	WATER JETBREAKER GROUP	ROMPECHORRO GRUPO
16	40-200-005	DOCCETTA RETE -INOX	DOUCHE	FILTERNUSCHE	SHOWER	DUCHA
17	25-124-007	VITE X DOCCETTA -AI-	VIS POUR DOUCHE	SCHRAUBE FUER DUSCHE	SCREW FOR SHOWER	TORNILLO DUCHA
18	40-100-001	FILTRO 1 DOSE BASSO-INOX	FILTRE 1 TASSE	FILTER FUER 1 TASSE	1 CUP FILTER	FILTRO 1 DOSIS
19	40-100-010	FILTRO LE 2 DOSI -INOX	FILTRE 2 DOSES	FILTER 2 PORTION	2 DOSE FILTER	FILTRO 2 DOSIS
20	10-071-110	PORTAFILTRO 1 DOSE COMPL.	PORTE-FILTRE 1 DOSE	FILTERHALTER 1 PORTION	1 DOSE FILTER-HOLDER	PORTAFILTRO 1 DOSIS
"	10-071-120	PORTAFILTRO 2 DOSI COMPL.	PORTE-FILTRE 2 DOSES	FILTERHALTER 2 PORTION	2 DOSE FILTER-HOLDER	PORTAFILTRO 2 DOSIS
21	10-041-055	TUBO 4X3X220 F3/8-F1/8-CU	TUBE 4X3X220 F3/8-F1/8	ROHR 4X3X220 F3/8-F1/8	PIPE 4X3X220 F3/8-F1/8	TUBO 4X3X220 F3/8-F1/8
22	20-126-501	RACCORDO CIRCOLAZ.RE -DT-	RACCORD CIRCULAT. RE	UMLAUFANSCHLUSSTUECK RE	RE CIRCULATION JUNCTION	UNION CIRCULACION RE
23	35-002-503	MANOMETRO 0-2,5 D.44 X L	MANOMETRE 0-2,5 D.44 X L	DRUCKMESSER 0-2,5 D.44 L	L MANOMETER 0-2,5 D.44	MANOMETRO 0-2,5 D.44 X L
24	27-090-151	PESCANTE ACQUA L -CU-	PLENGEUR EAU L	HEIB WASSERSCHÖPFER L	L WATER SUCTION PIPE	PESCANTE AGUA CALDA L
25	20-102-901	COPERCHIO CALDAIA L -DT-	COUVERCLE CHAUDIERE L	KESSELDECKEL L	L BOILER COVER	TAPA CALDERA L
26	37-040-821	VITE INOX M 8 X 22 TE	VIS M 8 X 22 INOX	SCHRAUBE M 8 X 22 INOX	INOX SCREW M 8 X 22	TORNILLO M 8 X 22 INOX
27	37-420-800	KOND.EL.D.8 BROWER ACC.BR	RONDELLE ELASTIQUE D.8	FEDERSCHEIBE D.8	ELASTIC WASHER DIAM.8	ARANDELA ELASTICA D.8
28	37-320-800	DADO M 8 NORMALE FE,ZN.	ECROU M 8	MUTTER M 8	NUT M 8	TUERCA M 8
29	36-402-001	GUARN.OR 105 ELETTR. -GH-	JOINT OR 105	OR 105 DICHTUNG	OR 105 GASKET	JUNTA OR 105
30	36-220-017	GUARNIZ.CALDAIA L -AM-	JOINT CHAUDIERE L	KESSELDICHTUNG L	L BOILER GASKET	JUNTA CALDERA L
31	37-430-600	ROS.DENT.EST.D.6 ACC.BR.	RONDELLE DENTEELE D.6	ZAHNSCHEIBE D.6	WASHER DIAM.6	ARANDELA DENTADA D.6
32	37-040-616	VITE INOX M 6 X 14 TE	VIS M 6 X 14	SCHRAUBE M 6 X 14	SCREW M 6 X 14	TORNILLO M 6 X 14
33	36-402-001	GUARN.OR 105 ELETTR. -GH-	JOINT OR 105	OR 105 DICHTUNG	OR 105 GASKET	JUNTA OR 105
34	34-040-005	ELETT.SIRAI V240/50HZ.3VI	SOUPAPE ELECTRIQUE V.240	ELEKTROVENTIL V.240	ELECTROVALVE V.240	ELECTROVALVULA V.240
"	34-040-010	ELETT.SIRAI V110/60HZ.3VI	SOUPAPE ELECTRIQUE V.110	ELEKTROVENTIL V.110	ELECTROVALVE V.110	ELECTROVALVULA V.110
"	34-040-011	ELETT.SIRAI V220/50HZ.3VI	SOUPAPE ELECTRIQUE V.220	ELEKTROVENTIL V.220	ELECTROVALVE V.220	ELECTROVALVULA V.220
35	37-030-418	VITE M 4 X 18 TC INOX	VIS M 4 X 18	SCHRAUBE M 4 X 18	SCREW M 4 X 18	TORNILLO M 4 X 18
36	10-060-360	INDICATORE LIVELLO L4-L6	INDICATEUR NIVEAU	PEGELANZEIGER	LEVEL INDICATOR	INDICADOR NIVEL
"	10-720-006	LIVELLO CON SONDIA L6-L7	NIVEAU AVEC SONDE L6-L7	PEGEL+SONDE L6-L7	LEVEL WITH BORE L6-L7	NIVEL CON SONDIA L6-L7
37	10-042-190	TUBO RAME SCARICO GR.	TUBE DECHARGE GR.	ABFLUSSROHR GR.	DRAIN PIPE GROUP	TUBO DESAGOTE GR.
"	10-705-116	TUBO SCARICO GR.L COMPL.	TUBE DE DECHARGE GR.L COM	ABFLUSSROHR GR.L KOMPL.	GR.L DRAIN PIPE WHOLE	TUBO DESAGOTE GR.L COMPL.
38	23-119-016	ROMPIGETTO SCARICO -DT-	BRISE-JET DECHARGE	ABFLUSSSTRAHLBRECHER	DRAIN JETBREAKER	ROMPECHORRO DESCARGA
39	28-250-045	COPRIROMPIGET.SCAR.RE-DT-	COUVER-BRISE-JET RE	STRAHLBRECHERKAPPE	RE JET-BREAKER COVER	CUBRE ROMPECHORRO RE
40	34-200-110	PRESSOSTATO MECCANICO	PRESSOSTAT MECANIQUE	MECH. DRUCKWAECHTER	MECHANIC PRESSURE SWITCH	PRESSOSTATO MECANICO
41	10-042-105	TUBO 6X4X270 F1/4-F1/4-CU	TUBE 6X4X270 F1/4-F1/4	ROHR 6X4X270 F1/4-F1/4	PIPE 6X4X270 F1/4-F1/4	TUBO 6X4X270 F1/4-F1/4
42	10-043-030	TUBO RAME SCARICO VS X L	TUBE DECHARGE VS, X L	ABFLUSSROHR VS, X L	L VS.DRAIN PIPE	TUBO DESAGOTE VS, X L
43	10-060-491	ELETTROVALV. L+RET. V.110	ELECTROVANNE L+RET V.110	ELEK.VENTIL L+RUECK V.110	L EL.VALVE+CKECK V.110	ELECTROVALV. L+RET V.110
"	10-060-492	ELETTROVALV. L+RET. V.220	ELECTROVANNE L+RET.V.220	ELEK.VENTIL L+RUECK V.220	L EL.VALVE+CKECK V.220	ELECTROVALV. L+RET.V.220
44	10-042-160	TUBO 6X4X130 F1/4-F1/4-CU	TUBE 6X4X130 F1/4-F1/4	ROHR 6X4X130 F1/4-F1/4	PIPE 6X4X130 F1/4-F1/4	TUBO 6X4X130 F1/4-F1/4
45	10-042-101	TUBO 6X4X300 F1/4-F1/4-CU	TUBE 6X4X300 F1/4-F1/4	ROHR 6X4X300 F1/4-F1/4	PIPE 6X4X300 F1/4-F1/4	TUBO 6X4X300 F1/4-F1/4
46	37-030-305	VITE M 3 X 5 TC FE,ZN.	VIS M 3 X 5	SCHRAUBE M 3 X 5	SCREW M 3 X 5	TORNILLO M 3 X 5
47	34-200-055	TERMOSTATO 140° + STAFF.	THERMOSTAT 140°	THERMOSTAT 140°	THERMOSTAT 140°	TERMOSTATO 140°
48	10-705-201	VENTOLINO Z9/DE + RACCORD	HELICE VENT. IE COMPL.	FLUEGEL DE KOMPL.	DE WHOLE FAN	CONTADOR DE COMPLETO
49	36-240-005	GUARN.SCAMBIATORE L-RAME-	JOINT L	AUSTAUCHERDICHTUNG L	L GASKET	JUNTA INTERCAMBIADOR L
50	28-050-001	TUBETTO SCAMBIATORE L-DT-	TUBE ECHANGEUR L	AUSTAUCHERROHR L	L HEAT-EXCHAN.PIPE	TUBO INTERCAMBIADOR L
51	10-030-031	SCAMBIATORE L -CU-	ECHANGEUR L	AUSTAUSCHER L	L HEAT-EXCHANGER	INTERCAMBIADOR L
52	10-025-011	CORPO CALDAIA L	CORPS CHAUDIERE L	KESSELKÖRPER L	L BOILER BODY	CUERPO CALDERA L
53	33-111-012	RESIST.V.110/1200 X L	RESIST.V.110/1200 X L	WIDERSTAND 110/1200 X L	L RESISTANCE V.110/1200	RESIST.V.110/1200 X L
"	33-122-016	RESIST.V.220/1600 X L	RESIST.V.220/1600 X L	WIDERSTAND 220/1600 X L	L RESISTANCE V.220/1600	RESIST.V.220/1600 X L
54	36-220-008	GUARN.GIGLEUR RE -AMIAN.	JOINT GIGLEUR	DUESENDICHTUNG	JET GASKET	JUNTA SURTIIDOR
55	23-143-005	RONDELLA SCAMBIAT. -DT-	RONDELLE ECHANGEUR	AUSTAUSCHERSCHEIBE	HEAT EXCHANG.WASHER	ARANDELA INTERCAMBIADOR
56	23-217-005	DADO BASSO 1/4 GAS -DT-	ECROU 1/4"	SCHRAUBENMUTTER 1/4"	NUT 1/4"	TUERCA BAJA 1/4"



	COD.	VARI L4-L6-L7	PIECES L4-L6-L7	VERSCHIED. TEILEN L4-L6-L7	L4-L6-L7 PARTS	VARIOS L4-L6-L7
	13-077-000	POMPA VH L6-L7 V.220	POMPE VH L6-L7 V.220	PUMPE VH L6-L7 V.220	L6-L7 VH PUMP V.220	BOMBA VH L6-L7 V.220
	13-077-010	POMPA VH L6-L7 V.110	POMPE VH L6-L7 V.110	PUMPE VH L6-L7 V.110	L6-L7 VH PUMP V.110	BOMBA VH L6-L7 V.110
	13-007-050	POMPA L4 V.220+BYPASS	POMPE L4 V.220+BYPASS	PUMPE L4 V.220+BYPASS	L4 V.220 PUMP+BYPASS	BOMBA L4 V.220+BYPASS
	13-007-055	POMPA L4 V.240+BYPASS	POMPE L4 V.240+BYPASS	PUMPE L4 V.240+BYPASS	L4 V.240 PUMP+BYPASS	BOMBA L4 V.240+BYPASS
	13-007-060	POMPA L4 V.110+BYPASS	POMPE L4 V.110+BYPASS	PUMPE L4 V.110+BYPASS	L4 V.110 PUMP+BYPASS	BOMBA L4 V.110+BYPASS
1	34-070-025	CENTR.DOSATURA 30F V.110	BOITE DOSAGE V.110	SCHACHTEL DOSIERUNGS V110	BOX DOSING V.110	CAJA DOSIFICACION V.110
"	34-070-026	CENTR.DOSATURA 30F V.220	BOITE DOSAGE V.220	SCHACHTEL DOSIERUNGS V220	BOX DOSING V.220	CAJA DOSIFICACION V.220
2	34-200-015	TRASDUTTORE RALS V.110	TRANSDUCTEUR RALS 110	WANDLER RALS 110	TRANSDUCTOR RALS 110	TRASDUCTOR RALS 110
"	34-200-016	TRASDUTTORE RALS V220/240	TRANSDUCTEUR RALS 220/240	WANDLER RALS 220/240	TRANSDUCTOR RALS 220/240	TRASDUCTOR RALS 220/240
3	37-153-925	VITE INOX 3,9X25 AUT.TCB	VIS INOX 3,9 X 25 AUTOFIL	SSCHN.SCHRAUBE INOX3.9X25	SELF-TAP.INOX SCR 3.9X 25	TORNIL.INOX 3.9X25 AUTOR.
4	10-060-950	FILTRO L6-L7 COMPLETE	FILTRE L6-L7 COMPLETE	FILTER L6-L7 KOMPLETT	L6-L7 WHOLE FILTER	FILTRO L6-L7 COMPLETO
5	26-220-005	DIADO BASSO 3/8 GAS -FE-	RACCORD X FILTRE L6-L7	ELEKTROVENTIL FILTER LT/N	L6-L7 FILTER JUNCTION	TUERCA BAJA 3/8
6	23-227-001	RACCORDO FILTRO L6-L7-OT-	RACCORD X FILTRE L6-L7	DECHEL X FILTER L6-L7	LT/N ELECTROVALVE FILTER	UNION FILTRO L6-L7
7	38-223-023	FILTRO X ELETTROV.LT/N -PL-	FILTRE ELECTROVANNE LT/N	GUMMISCHLAUCH D.17 X B	L6-L7 FILTER CAP	FILTRO ELECTROVAL.LT/N
8	23-225-001	TAPPO FILTRO L6-L7 -OT-	BOUCHON X FILTRE L6-L7	SCHRAUBENMUTTER D.17 X B	RUBBER PIPE DIAM.17 X 8	TAPON FILTRO L6-L7
9	36-901-500	TUBO 17X8-25ATM-GOMMA	TUYAU CAOUTCHOUC D.17X8	SCHLE 0.13-20	HOSE CLAMP 13-20	TUBO GOMA D.17 X 8
10	69-000-081	FASCETTA ABA D.13-20 FE.Z	SEGMENT R.13-20	HOH. SCHRAUBENMUTTER 3/8	BIG NUT 3/8	ARRAZADERA D. 13-20
11	23-222-020	DIADO ALTO 3/8 GAS -OT-	ECROU HAUT 3/8	GUMMIALTER D.8	RUBBER-HOLDER DIAM.8	TUERCA ALTA 3/8
12	23-125-039	PORTAGOMMA D.8	PORTE-GOMME D.8	SICHERHEITSVENTIL L	L SAFETY VALVE	PORTAGONA D.8
13	10-060-530	VALVOLA SICUREZZA L	SOUPAPE SURETE L	SICHERHEITSVENTIL 1/4"	NUT 1/4"	VALVULA SEGURIDAD L
14	23-217-005	DIADO BASSO 1/4 GAS -OT-	ECROU 1/4"	REG.SV.DECHEL L	L REG.SV.CAP	TUERCA BAJA 1/4"
15	23-123-001	TAPPO REG.V.S. L -OT-	BOUCHON REG.VS. L	BY-PASS VENTILFEDER	BY PASS SPRING	TAPON REGUL.V.S. L
16	39-110-042	MOLLA X VALVOLA BY-PASS	RESSORT BY-PASS	TEFLONSTIFT	PIN CONE	RESORTE BY-PASS
17	36-130-002	SPILLO RITEGNO AT-TEFLON-	EPINGLE TEFLON	SICH.VENTIL KDERPER L	L SAFETY VALVE BODY	AGUSTA TEFLON
18	23-217-003	CORPO VALV.SICUR. L -OT-	CORPS SOUP.SURETE L	KUPFERDICHTUNG 1/4	COPPER BASKET 1/4	CUERPO VALV.SICURID. L
19	27-270-001	GUARIZIONE 1/4 GAS -CU-	JOINT 1/4 CUIVRE	BY PASS KOMPLETT	BY-PASS FOR VH	JUNTA 1/4 COBRE
20	13-010-390	BY-PASS COMPLETO X VH	BY-PASS COMPLET	SCHLENNPUMPE VH	VH COLLAR PUMP	RESORTE COMPLETO
21	69-000-002	POMPAnte VH A COLLARE	POMPE VH A COLLIER	MOTOR VH V.110 X L6-L7	L6-L7 MOTOR V.110	BOMBEADOR VH COLLAR
22	34-011-001	MOTORE VH V.110 X L6-L7	MOTEUR VH V.110 X L6-L7	MOTOR VH V.220 X L6-L7	L6-L7 MOTOR V.220	MOTOR VH V.110 X L6-L7
"	34-011-002	MOTORE VH V.220 X L6-L7	MOTEUR VH V.220 X L6-L7	SCHRAUBENMUTTER M 6	NUT M 6	MOTOR VH V.220 X L6-L7
23	37-320-600	DIADO M 6 NORMALE FE.ZN.	ECROU M 6	FEDERSCHLEIBE D.6	PLANE WASHER DIAM. 6	TUERCA M 6
24	37-410-600	RONDELLA PIANA D.6 FE.ZN.	RONDELLE PLANE D.6	ZAHNSCHLEIBE D.6	WASHER DIAM.6	ARANDELA PLANA D.6
25	37-430-600	ROS.DENT.EST.D.6 ACC.BR.	VIS M 6 X 15	SCHRAUBE M 6 X 15	SCREW M 6 X 15	ARANDELA DENTADA D.6
26	37-040-615	VITE M 6 X 15 TE FE.ZN.	VIS M 6 X 15	KONDENSATOR VH V.110 XL6	L6 CONDENSATOR VH V.110	TORNILLO M 6 X 15
27	34-020-013	CONDENSATORE VH V.110 XL6	KONDENSATEUR VH V.110 XL6	KONDENSATOR VH V.220 XL6	L6 CONDENSATOR VH V.220	CONDENSADOR VH V.110 XL6
"	34-020-014	CONDENSATORE VH V.220 XL6	KONDENSATEUR VH V.220 XL6	PUMPEWINKEL L4	L4 PUMP SUPPORT	CONDENSADOR VH V.220 XL6
28	32-559-064	SOSTEGNO POMPAnte L4 -FE-	SUPPORT POMPE L4	ABSTANDRING D.6 X 18	WASHER DIAM. 6 X 18	ANGULAR BOMBA L4
29	37-410-610	RONDELLA D.6 X 18 FE.ZN.	RONDELLE D.6 X 18	SCHRAUBE M 6 X 10	SCREW M 6 X 10	ARANDELA D.6 X 18
30	37-040-610	VITE M 6 X 10 TE FE.ZN.	VIS M 6 X 10	SILIKONSCHLAUCH 9X6X560	SILICONE HOSE 9X6X560	TORNILLO M 6 X 10
31	38-228-002	TUBO SILICONE D.9X6X560	TUBE SILICONE 9X6X560	WASSERENTHAERTER	SOFTENER	TUBO SILICONE 9X6X560
32	69-000-140	DECALCIFICATORE	ADOUUCISSEUR	SCHLAUCHTUNIER E 8	CLAMP WITHOUT E 8 SCREW	SUAUZADOR
33	39-930-007	FASCETTA SENZA VITE E 8	SEGMENT SANS VIS E 8	ANSCHLUSSSTUECK FUER POMPE	PUMP CONNECTOR	COTILLA SIN VID E 8
34	38-121-024	RACCORDO ASPIRAZIONE -PL-	RACCORD POMPE	PUMPE V.110	PUMP V.110	UNION BOMBA
35	34-011-015	POMPAnte MISS V.110	POMPE V.110	PUMPE V.220	PUMP V.220	BOMBA V.110
"	34-011-016	POMPAnte MISS V.220	POMPE V.220	PUMPE V.240	PUMP V.240	BOMBA V.220
"	34-011-017	POMPAnte MISS V.240	POMPE V.240	SUPPORT L4	SUPPORT L4	BOMBA V.240
36	32-230-020	SOSTEGNO PRESS.SU L4 -AI-	SUPPORT L4	WINKEL L4	WINKEL L4	SOPORTE L4
37	37-113-913	VITE 3,9 X 13 AUTOF.TC	VIS 3,9 X 13	SCHRAUBE 3,9 X 13	SCREW 3.9 X 13	TORNILLO 3.9 X 13
38	34-200-061	PRESSOSTATO 1 LIVELLO 760	PRESSOSTAT	PRESSOSTAT	PRESSOSTAT	PRESOSTATO
39	39-930-003	FASCETTA SENZA VITE E 3	SEGMENT SANS VIS E 3	SCHLAUCHBINDER E 3	CLAMP WITHOUT E 3 SCREW	COTILLA SIN VID E 3
40	38-228-030	TUBO PVC D.7X4 TRASPARENT	TUBE PVC D.7 X 4	PVC SCHLAUCH D.7 X 4	PVC HOSE D.7 X 4	TUBO PVC D.7 X 4
41	38-123-013	TRAPPOLA ARIA -PL-	INDICATEUR DE NIVEAU	WASSERSTAND-SENSOR	LEVEL-SENSOR	JANLA AIRE
42	10-060-491	ELETTROVALV. L+RET. V.110	ELECTROVANNE L+RET.V.110	ELEK.VENTIL L+RUECK V.110	L EL.VALVE+CHECK V.110	ELECTROVALV. L+RET V.110
"	10-060-492	ELETTROVALV. L+RET. V.220	ELECTROVANNE L+RET.V.220	ELEK.VENTIL L+RUECK V.220	L EL.VALVE+CHECK V.220	ELECTROVALV. L+RET.V.220
"	10-706-055	VALVOLA RITEGNO L	SOUPAPE RETEN. L	RUECKSCHL.VENT. L	CHECK VALVE L	VALVOLA RETEN. L
43	20-123-102	RACC.ELETTROVALVOLA L-OT-	RACCORD ELECTROV. L	ELEKTROV.ANSCHLUSS L	L EL.VALVE JUNCTION	UNION ELECTROVALVOLA L
44	10-706-070	FILTRO X GIGLEUR	FILTRE X GIGLEUR	FILTER X DUESE	FILTER GASJET	FILTRO X SURTIDOR
45	39-110-064	MOLLA VALVOLA RIT.CF/AT	RESSORT SOUPAPE DE RETEN.	RUECKSC.VENTIL FEDER CF/AT	CF/AT CHECK VALVE SPRING	RESORTE RETENCION CF/AT
46	23-206-001	GIGLEUR X MACCHINA L-OT-	GIGLEUR	DUESE	JET	CHICLER
47	23-214-025	RACCORDO 1/4-1/8 GAS -OT-	RACCORD	ANSCHLUSSSTUECK	JUNCTION	UNION
48	34-040-003	ELETTROV.SIRAI V110 2VIE	ELECTROVANNE 110 RALS	ELEKTROVENTIL 110 RALS	ELECTROVALVE 110 RALS	ELECTROVALVOLA 110 RALS
"	34-040-004	ELETTROV.SIRAI V220 2VIE	ELECTROVANNE 220 RALS	ELEKTROVENTIL 220 RALS	ELECTROVALVE 220 RALS	ELECTROVALVOLA 220 RALS
49	20-125-351	CORPO VALV.RITEGNO L -OT-	CORPS SOUPAPE RETENUE	VENTILKOEPPER	VALVE BODY	CUERPO VALVOLA RETENCI
50	27-350-001	GUARIZIONE 3/8 GAS -CU-	JOINT 3/8	DICHTUNG 3/8	GASKET 3/8	JUNTA 3/8
51	36-407-001	OR 2031 KW 75-GOMMA	OR 2031 SOUPAPE RETENUE	OR 2031 RUECKSCHL.VENTIL	OR 2031 FOR CHECK VALVE	OR 2031 JUNTA VALVOLA RET
52	23-120-025	VALVOLINO RITEGNO -OT-	SOUPAPE RETENUE	RUECKSCHLAGVENTIL	CHECK VALVE	VALVOLA RETENCION
53	39-110-070	MOLLA VALV.RITEGNO PDL	RESSORT RETENUE	RUECKSCHLAGV.-FEDER	CHECK VALVE SPRING	RESORTE RETENCION
54	23-220-008	RACCORDO VALV.RIT. L -OT-	RACCORD SOUPAPE RIT.L-OT-	VENTILANSCHLUSS L -OT-	L VALVE JUNCTION -OT-	UNION VALVOLA L -OT-
55	23-217-029	PORTAG. USCITA POMP.L4-OT-	PORTE-GOMME POMPE L4	GUMMIALTER L4	L4 RUBBER-HOLDER	PORTAGONA BOMBA L4
56	23-214-008	RACCORDO POMPA L4 -OT-	RACCORD POMPE L4	ANSCHLUSS L4	L4 JUNCTION	UNION L4
57	23-214-002	DIADO BASSO 1/8 GAS -OT-	ECROU EN LAITON 1/8 GAZ	SCHRAUBENMUTTER	BRASS NUT 1/8 GAS	TUERCA
58	20-123-751	CORPO VALV.ESPAN.MISS-OT-	CORPS SOUPAPE EXPANSION	EXPANS.VENTILGEHAEUSE	ROBY EXPANSION VALVE	CUERPO VALVOLA EXPANSION
59	25-118-002	VITE FERMAGIARN.SC.NE-AI-	VIS X ARKET-JOINT	SCHRAUBE X DICHTHALTER	STOP GASKET SCREW	TORNILLO DESCARGA
60	36-302-001	GUARN.VAL.ESPANS MISS-GH-	JOINT	DICHTUNG	GASKET	PASTILLA
61	23-120-020	PORTAFASTIGLIA MISS -OT-	PORTE-JOINT	SCHLEIBENHALTER	PAU-HOLDER	PORTAFASTILLA
62	39-110-040	MOLLA REGULATORE GAS	RESSORT	FEDER	SPRING	RESORTE
63	23-220-014	PORTAGOMMA SCARICO L4-OT-	PORTE-GOMME L4	GUMMIALTER L4	L4 RUBBER-HOLDER	PORTAGONA L4
64	39-930-001	FASCETTA SENZA VITE E 1	SEGMENT SANS VIS E 1	SCHLAUCHBINDER E 1	CLAMP WITHOUT E 1 SCREW	COTILLA SIN VID E 1
65	38-228-005	TUBO ALIM.SILICONE D.4 X 6	TUBE SILICONE D.4 X 6	SILIKONSCHLAUCH D.4 X 6	SILICONE HOSE D.4 X 6	TUBO SILICONE D.4 X 6



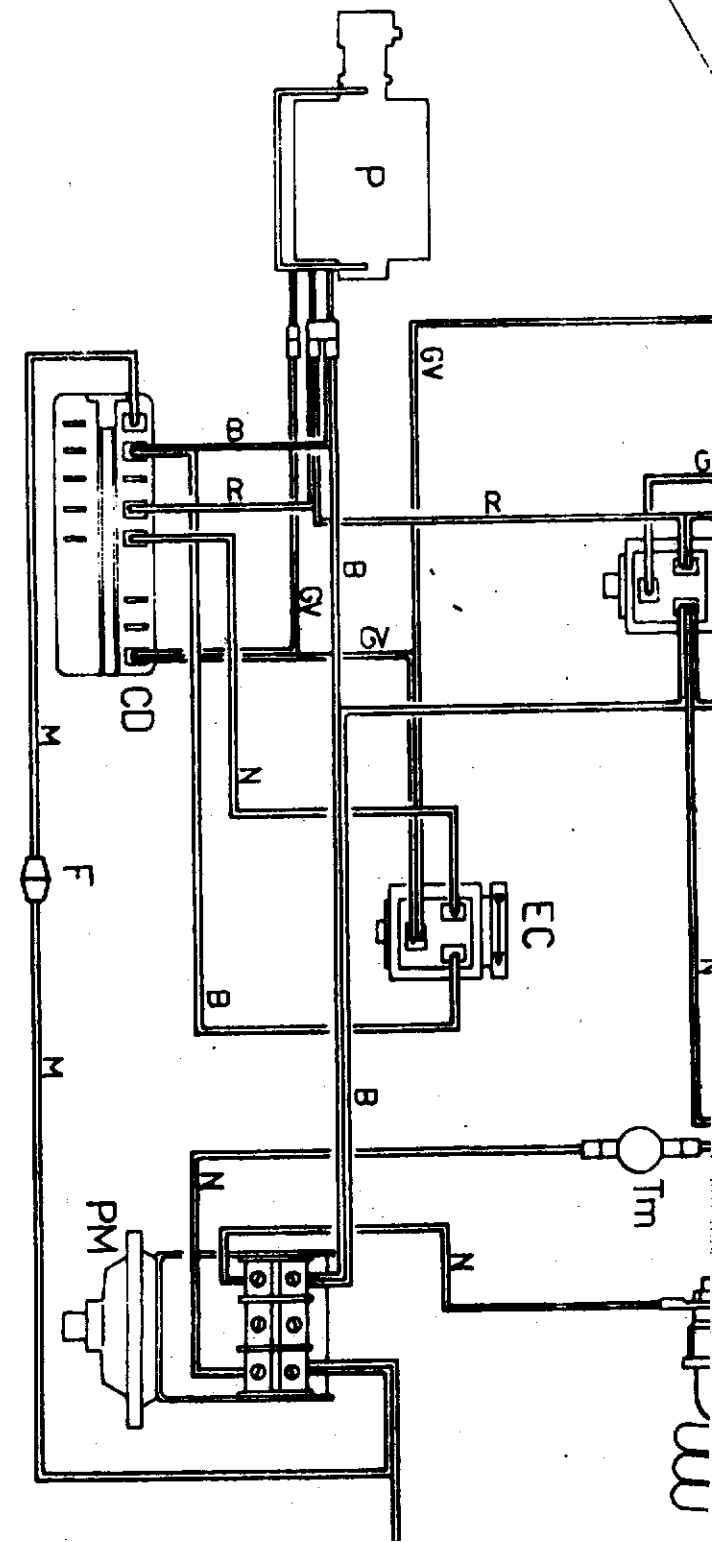
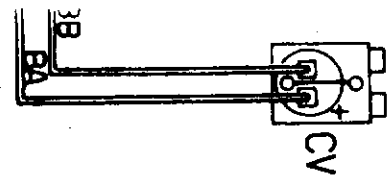
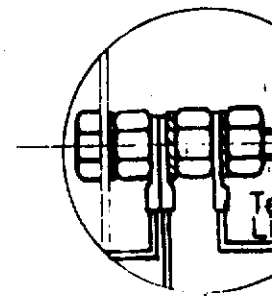
L7
SC380

V.110
V.220
V.240

VARIANTE PER AUSTRALIA

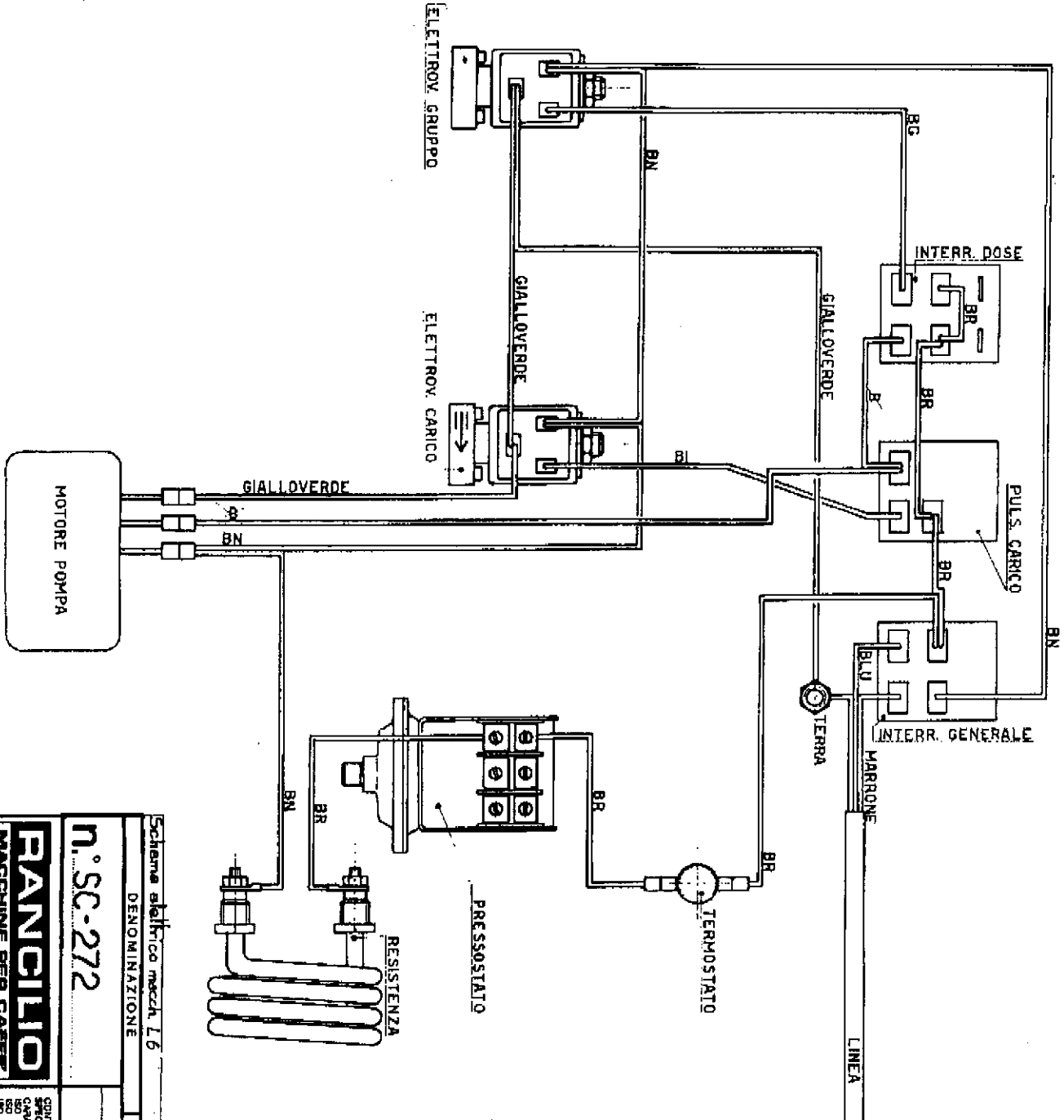
- 1. - M.1.1. - M.1.1.1. - M.1.1.2. - M.1.1.3. - M.1.1.4. - M.1.1.5. - M.1.1.6. - M.1.1.7. - M.1.1.8. - M.1.1.9. - M.1.1.10. - M.1.1.11. - M.1.1.12. - M.1.1.13. - M.1.1.14. - M.1.1.15. - M.1.1.16. - M.1.1.17. - M.1.1.18. - M.1.1.19. - M.1.1.20. - M.1.1.21. - M.1.1.22. - M.1.1.23. - M.1.1.24. - M.1.1.25. - M.1.1.26. - M.1.1.27. - M.1.1.28. - M.1.1.29. - M.1.1.30. - M.1.1.31. - M.1.1.32. - M.1.1.33. - M.1.1.34. - M.1.1.35. - M.1.1.36. - M.1.1.37. - M.1.1.38. - M.1.1.39. - M.1.1.40. - M.1.1.41. - M.1.1.42. - M.1.1.43. - M.1.1.44. - M.1.1.45. - M.1.1.46. - M.1.1.47. - M.1.1.48. - M.1.1.49. - M.1.1.50. - M.1.1.51. - M.1.1.52. - M.1.1.53. - M.1.1.54. - M.1.1.55. - M.1.1.56. - M.1.1.57. - M.1.1.58. - M.1.1.59. - M.1.1.60. - M.1.1.61. - M.1.1.62. - M.1.1.63. - M.1.1.64. - M.1.1.65. - M.1.1.66. - M.1.1.67. - M.1.1.68. - M.1.1.69. - M.1.1.70. - M.1.1.71. - M.1.1.72. - M.1.1.73. - M.1.1.74. - M.1.1.75. - M.1.1.76. - M.1.1.77. - M.1.1.78. - M.1.1.79. - M.1.1.80. - M.1.1.81. - M.1.1.82. - M.1.1.83. - M.1.1.84. - M.1.1.85. - M.1.1.86. - M.1.1.87. - M.1.1.88. - M.1.1.89. - M.1.1.90. - M.1.1.91. - M.1.1.92. - M.1.1.93. - M.1.1.94. - M.1.1.95. - M.1.1.96. - M.1.1.97. - M.1.1.98. - M.1.1.99. - M.1.1.100.

Blow-up
OF PREVIOUS PAGE



- | | | | |
|-----------------------|--|--|--|
| B - BLU | B - BLAU | B - BLUE | B - AZUL |
| Ba- BLANCO-azulcristo | Ba- WEISS-ORANGE | Ba- WHITE-ORANGE | Ba- BLANCO-ORANJA |
| Bb- BLANCO-BLU | Bb- WEISS-ROU | Bb- WHITE-BLUE | Bb- BLANCO-AZUL |
| Bc- BLANCO-VITALLLO | Bc- WEISS-GELB | Bc- WHITE-YELLOW | Bc- BLANCO-AMARILLO |
| Bd- BLANCO | Bd- WEISS | Bd- WHITE | Bd- BLANCO |
| Be- BLANCO-NEGRU | Be- WEISS-SCHWARZ | Be- WHITE-BLACK | Be- BLANCO-NEGRO |
| Bf- BLANCO-ROSSO | Bf- WEISS-ROT | Bf- WHITE-RED | Bf- BLANCO-ROJO |
| Bg- BIANCO | Bg- GELB | Bg- YELLOW | Bg- AMARILLO |
| Bh- BIANCO-VERDE | Bh- GELB-GRUEN | Bh- YELLOW-GREEN | Bh- BIANCO-VERDE |
| Bj- BIANCO | Bj- GRUEN | Bj- GREEN | Bj- VERDE |
| Bk- BIANCO-VERDE | Bk- GRUEN-SCHWARZ | Bk- GREEN-BLACK | Bk- VERDE-NEGRO |
| Bm- BIANCO | Bm- SCHWARZ | Bm- BLACK | Bm- NEGRO |
| Bn- BIANCO | Bn- ROT | Bn- RED | Bn- ROJO |
| Bp- BIANCO | Bp- ROT-GRUEN | Bp- RED-GREEN | Bp- ROJO-VERDE |
| Bq- BIANCO | Bq- ROT-SCHWARZ | Bq- RED-BLACK | Bq- ROJO-NEGRO |
| Bs- BIANCO | Bs- ROT-GRUEN-SCHWARZ | Bs- RED-GREEN-BLACK | Bs- ROJO-VERDE-NEGRO |
| Bt- BIANCO | Bt- ROT-GRUEN-SCHWARZ-WEISS | Bt- RED-GREEN-BLACK-WHITE | Bt- ROJO-VERDE-NEGRO-BLANCO |
| Bu- BIANCO | Bu- ROT-GRUEN-SCHWARZ-WEISS-ORANGE | Bu- RED-GREEN-BLACK-WHITE-ORANGE | Bu- ROJO-VERDE-NEGRO-BLANCO-ORANJA |
| Bv- BIANCO | Bv- ROT-GRUEN-SCHWARZ-WEISS-ORANGE-YELLOW | Bv- RED-GREEN-BLACK-WHITE-ORANGE-YELLOW | Bv- ROJO-VERDE-NEGRO-BLANCO-ORANJA-AMARILLO |
| Bw- BIANCO | Bw- ROT-GRUEN-SCHWARZ-WEISS-ORANGE-YELLOW-BLUE | Bw- RED-GREEN-BLACK-WHITE-ORANGE-YELLOW-BLUE | Bw- ROJO-VERDE-NEGRO-BLANCO-ORANJA-AMARILLO-AZUL |
| Bx- BIANCO | Bx- ROT-GRUEN-SCHWARZ-WEISS-ORANGE-YELLOW-BLUE-VIOLET | Bx- RED-GREEN-BLACK-WHITE-ORANGE-YELLOW-BLUE-VIOLET | Bx- ROJO-VERDE-NEGRO-BLANCO-ORANJA-AMARILLO-AZUL-VIOLETA |
| By- BIANCO | By- ROT-GRUEN-SCHWARZ-WEISS-ORANGE-YELLOW-BLUE-VIOLET-BROWN | By- RED-GREEN-BLACK-WHITE-ORANGE-YELLOW-BLUE-VIOLET-BROWN | By- ROJO-VERDE-NEGRO-BLANCO-ORANJA-AMARILLO-AZUL-VIOLETA-MARRON |
| Bz- BIANCO | Bz- ROT-GRUEN-SCHWARZ-WEISS-ORANGE-YELLOW-BLUE-VIOLET-BROWN-PINK | Bz- RED-GREEN-BLACK-WHITE-ORANGE-YELLOW-BLUE-VIOLET-BROWN-PINK | Bz- ROJO-VERDE-NEGRO-BLANCO-ORANJA-AMARILLO-AZUL-VIOLETA-MARRON-ROSA |
-
- | | | | |
|-----------------------|--|--|--|
| Ba- BLANCO-azulcristo | Ba- WEISS-ORANGE | Ba- WHITE-ORANGE | Ba- BLANCO-ORANJA |
| Bb- BLANCO-BLU | Bb- WEISS-ROU | Bb- WHITE-BLUE | Bb- BLANCO-AZUL |
| Bc- BLANCO-VITALLLO | Bc- WEISS-GELB | Bc- WHITE-YELLOW | Bc- BLANCO-AMARILLO |
| Bd- BLANCO | Bd- WEISS | Bd- WHITE | Bd- BLANCO |
| Be- BLANCO-NEGRU | Be- WEISS-SCHWARZ | Be- WHITE-BLACK | Be- BLANCO-NEGRO |
| Bf- BLANCO-ROSSO | Bf- WEISS-ROT | Bf- WHITE-RED | Bf- BLANCO-ROJO |
| Bg- BIANCO | Bg- GELB | Bg- YELLOW | Bg- AMARILLO |
| Bh- BIANCO-VERDE | Bh- GELB-GRUEN | Bh- YELLOW-GREEN | Bh- BIANCO-VERDE |
| Bi- BIANCO | Bi- GRUEN | Bi- GREEN | Bi- VERDE |
| Bj- BIANCO-VERDE | Bj- GRUEN-SCHWARZ | Bj- GREEN-BLACK | Bj- VERDE-NEGRO |
| Bk- BIANCO | Bk- SCHWARZ | Bk- BLACK | Bk- NEGRO |
| Bl- BIANCO | Bl- ROT | Bl- RED | Bl- ROJO |
| Bm- BIANCO | Bm- ROT-GRUEN | Bm- RED-GREEN | Bm- ROJO-VERDE |
| Bn- BIANCO | Bn- ROT-SCHWARZ | Bn- RED-BLACK | Bn- ROJO-NEGRO |
| Bo- BIANCO | Bo- ROT-GRUEN-SCHWARZ | Bo- RED-GREEN-BLACK | Bo- ROJO-VERDE-NEGRO |
| Bp- BIANCO | Bp- ROT-GRUEN-SCHWARZ-WEISS | Bp- RED-GREEN-BLACK-WHITE | Bp- ROJO-VERDE-NEGRO-BLANCO |
| Bq- BIANCO | Bq- ROT-GRUEN-SCHWARZ-WEISS-ORANGE | Bq- RED-GREEN-BLACK-WHITE-ORANGE | Bq- ROJO-VERDE-NEGRO-BLANCO-ORANJA |
| Br- BIANCO | Br- ROT-GRUEN-SCHWARZ-WEISS-ORANGE-YELLOW | Br- RED-GREEN-BLACK-WHITE-ORANGE-YELLOW | Br- ROJO-VERDE-NEGRO-BLANCO-ORANJA-AMARILLO |
| Bs- BIANCO | Bs- ROT-GRUEN-SCHWARZ-WEISS-ORANGE-YELLOW-BLUE | Bs- RED-GREEN-BLACK-WHITE-ORANGE-YELLOW-BLUE | Bs- ROJO-VERDE-NEGRO-BLANCO-ORANJA-AMARILLO-AZUL |
| Bt- BIANCO | Bt- ROT-GRUEN-SCHWARZ-WEISS-ORANGE-YELLOW-BLUE-VIOLET | Bt- RED-GREEN-BLACK-WHITE-ORANGE-YELLOW-BLUE-VIOLET | Bt- ROJO-VERDE-NEGRO-BLANCO-ORANJA-AMARILLO-AZUL-VIOLETA |
| Bu- BIANCO | Bu- ROT-GRUEN-SCHWARZ-WEISS-ORANGE-YELLOW-BLUE-VIOLET-BROWN | Bu- RED-GREEN-BLACK-WHITE-ORANGE-YELLOW-BLUE-VIOLET-BROWN | Bu- ROJO-VERDE-NEGRO-BLANCO-ORANJA-AMARILLO-AZUL-VIOLETA-MARRON |
| Bv- BIANCO | Bv- ROT-GRUEN-SCHWARZ-WEISS-ORANGE-YELLOW-BLUE-VIOLET-BROWN-PINK | Bv- RED-GREEN-BLACK-WHITE-ORANGE-YELLOW-BLUE-VIOLET-BROWN-PINK | Bv- ROJO-VERDE-NEGRO-BLANCO-ORANJA-AMARILLO-AZUL-VIOLETA-MARRON-ROSA |
-
- | | | | |
|-----------------------|--|--|--|
| Ba- BLANCO-azulcristo | Ba- WEISS-ORANGE | Ba- WHITE-ORANGE | Ba- BLANCO-ORANJA |
| Bb- BLANCO-BLU | Bb- WEISS-ROU | Bb- WHITE-BLUE | Bb- BLANCO-AZUL |
| Bc- BLANCO-VITALLLO | Bc- WEISS-GELB | Bc- WHITE-YELLOW | Bc- BLANCO-AMARILLO |
| Bd- BLANCO | Bd- WEISS | Bd- WHITE | Bd- BLANCO |
| Be- BLANCO-NEGRU | Be- WEISS-SCHWARZ | Be- WHITE-BLACK | Be- BLANCO-NEGRO |
| Bf- BLANCO-ROSSO | Bf- WEISS-ROT | Bf- WHITE-RED | Bf- BLANCO-ROJO |
| Bg- BIANCO | Bg- GELB | Bg- YELLOW | Bg- AMARILLO |
| Bh- BIANCO-VERDE | Bh- GELB-GRUEN | Bh- YELLOW-GREEN | Bh- BIANCO-VERDE |
| Bi- BIANCO | Bi- GRUEN | Bi- GREEN | Bi- VERDE |
| Bj- BIANCO-VERDE | Bj- GRUEN-SCHWARZ | Bj- GREEN-BLACK | Bj- VERDE-NEGRO |
| Bk- BIANCO | Bk- SCHWARZ | Bk- BLACK | Bk- NEGRO |
| Bl- BIANCO | Bl- ROT | Bl- RED | Bl- ROJO |
| Bm- BIANCO | Bm- ROT-GRUEN | Bm- RED-GREEN | Bm- ROJO-VERDE |
| Bn- BIANCO | Bn- ROT-SCHWARZ | Bn- RED-BLACK | Bn- ROJO-NEGRO |
| Bo- BIANCO | Bo- ROT-GRUEN-SCHWARZ | Bo- RED-GREEN-BLACK | Bo- ROJO-VERDE-NEGRO |
| Bp- BIANCO | Bp- ROT-GRUEN-SCHWARZ-WEISS | Bp- RED-GREEN-BLACK-WHITE | Bp- ROJO-VERDE-NEGRO-BLANCO |
| Bq- BIANCO | Bq- ROT-GRUEN-SCHWARZ-WEISS-ORANGE | Bq- RED-GREEN-BLACK-WHITE-ORANGE | Bq- ROJO-VERDE-NEGRO-BLANCO-ORANJA |
| Br- BIANCO | Br- ROT-GRUEN-SCHWARZ-WEISS-ORANGE-YELLOW | Br- RED-GREEN-BLACK-WHITE-ORANGE-YELLOW | Br- ROJO-VERDE-NEGRO-BLANCO-ORANJA-AMARILLO |
| Bs- BIANCO | Bs- ROT-GRUEN-SCHWARZ-WEISS-ORANGE-YELLOW-BLUE | Bs- RED-GREEN-BLACK-WHITE-ORANGE-YELLOW-BLUE | Bs- ROJO-VERDE-NEGRO-BLANCO-ORANJA-AMARILLO-AZUL |
| Bt- BIANCO | Bt- ROT-GRUEN-SCHWARZ-WEISS-ORANGE-YELLOW-BLUE-VIOLET | Bt- RED-GREEN-BLACK-WHITE-ORANGE-YELLOW-BLUE-VIOLET | Bt- ROJO-VERDE-NEGRO-BLANCO-ORANJA-AMARILLO-AZUL-VIOLETA |
| Bu- BIANCO | Bu- ROT-GRUEN-SCHWARZ-WEISS-ORANGE-YELLOW-BLUE-VIOLET-BROWN | Bu- RED-GREEN-BLACK-WHITE-ORANGE-YELLOW-BLUE-VIOLET-BROWN | Bu- ROJO-VERDE-NEGRO-BLANCO-ORANJA-AMARILLO-AZUL-VIOLETA-MARRON |
| Bv- BIANCO | Bv- ROT-GRUEN-SCHWARZ-WEISS-ORANGE-YELLOW-BLUE-VIOLET-BROWN-PINK | Bv- RED-GREEN-BLACK-WHITE-ORANGE-YELLOW-BLUE-VIOLET-BROWN-PINK | Bv- ROJO-VERDE-NEGRO-BLANCO-ORANJA-AMARILLO-AZUL-VIOLETA-MARRON-ROSA |

BI	BIANCO	BLANC	WHITE	WEISS	BLANCO
BB	BIANCO BLU	BLANC BLEU	WHITE BLUE	WEISS BLAU	BLANCO AZUL
BG	BIANCO GIALLLO	BLANC JAUNE	WHITE YELLOW	WEISS GELD	BLANCO AMARILLO
BN	BIANCO NERO	BLANC NOIR	WHITE BLACK	WEISS SCHWARZ	BLANCO NEGRO
BR	BIANCO ROSSO	BLANC ROUGE	WHITE RED	WEISS ROT	BLANCO ROJO
B	BLU	BLEU	BLUE	BLAU	AZUL
	GIALLDVERDE	JAUNEVERT	YELLOWGREEN	GELBGRUEN	AMARILLOVERDE



Schema elettrico macchina L6

DENOMINAZIONE

n. SC-272

RANCILIO
MACHINE PER CAFFE'

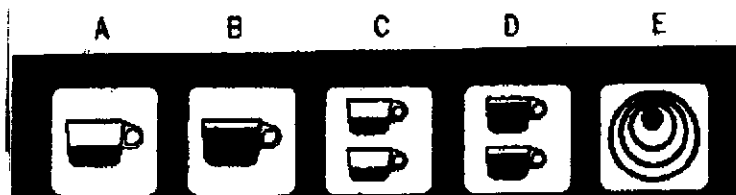
Scale	Materiali	WIRE
1	2	3
4	5	6
7	8	9
10	11	12
13	14	15
16	17	18
19	20	21
22	23	24
25	26	27
28	29	30
31	32	33
34	35	36
37	38	39
40	41	42
43	44	45
46	47	48
49	50	51
52	53	54
55	56	57
58	59	60
61	62	63
64	65	66
67	68	69
70	71	72
73	74	75
76	77	78
79	80	81
82	83	84
85	86	87
88	89	90
91	92	93
94	95	96
97	98	99
100	101	102
103	104	105
106	107	108
109	110	111
112	113	114
115	116	117
118	119	120
121	122	123
124	125	126
127	128	129
130	131	132
133	134	135
136	137	138
139	140	141
142	143	144
145	146	147
148	149	150
151	152	153
154	155	156
157	158	159
160	161	162
163	164	165
166	167	168
169	170	171
172	173	174
175	176	177
178	179	180
181	182	183
184	185	186
187	188	189
190	191	192
193	194	195
196	197	198
199	200	201
202	203	204
205	206	207
208	209	210
211	212	213
214	215	216
217	218	219
220	221	222
223	224	225
226	227	228
229	230	231
232	233	234
235	236	237
238	239	240
241	242	243
244	245	246
247	248	249
250	251	252
253	254	255
256	257	258
259	260	261
262	263	264
265	266	267
268	269	270
271	272	273
274	275	276
277	278	279
280	281	282
283	284	285
286	287	288
289	290	291
292	293	294
295	296	297
298	299	300

27/8/84
6/9/85
29/1/88

Colori Blu e in color bianco-verde.
Variante denominazione dia (tetto L4)
Sostituito press-micro con press. meccanica.

Programming instructions for Models L7 and S10

- A - Single Shot
- B - Long Shot
- C - Double Shot
- D - Double Long Shot
- E - Continuous Flow

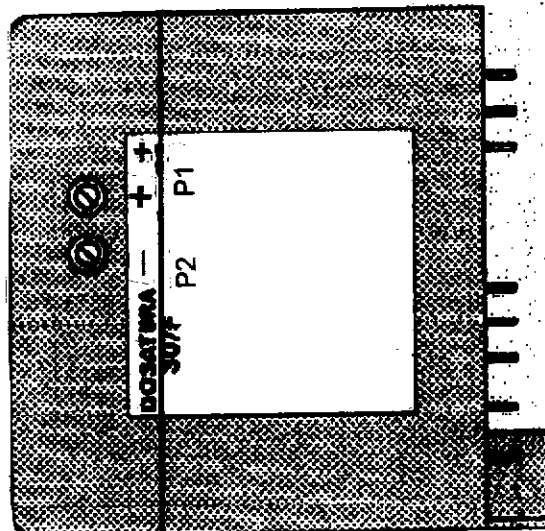


NOTE: To select a dose, press the button for one second.
Wait for brewing cycle to end before choosing another selection.

Dosage Programming

On the dosage box there are two screws
Protected by plastic caps. Remove the
Plastic caps to adjust the dose amounts.

P1 corresponds to Button A – single shot
P2 corresponds to Button B - long shot



By turning the screw toward the + (plus sign) the amount of water is increased.

By turning the screw toward the - (minus sign) the amount of water is decreased.

Buttons C and D will automatically double the doses of buttons A and B, respectively.

NOTE: On Model S10, the groups must be programmed independently.